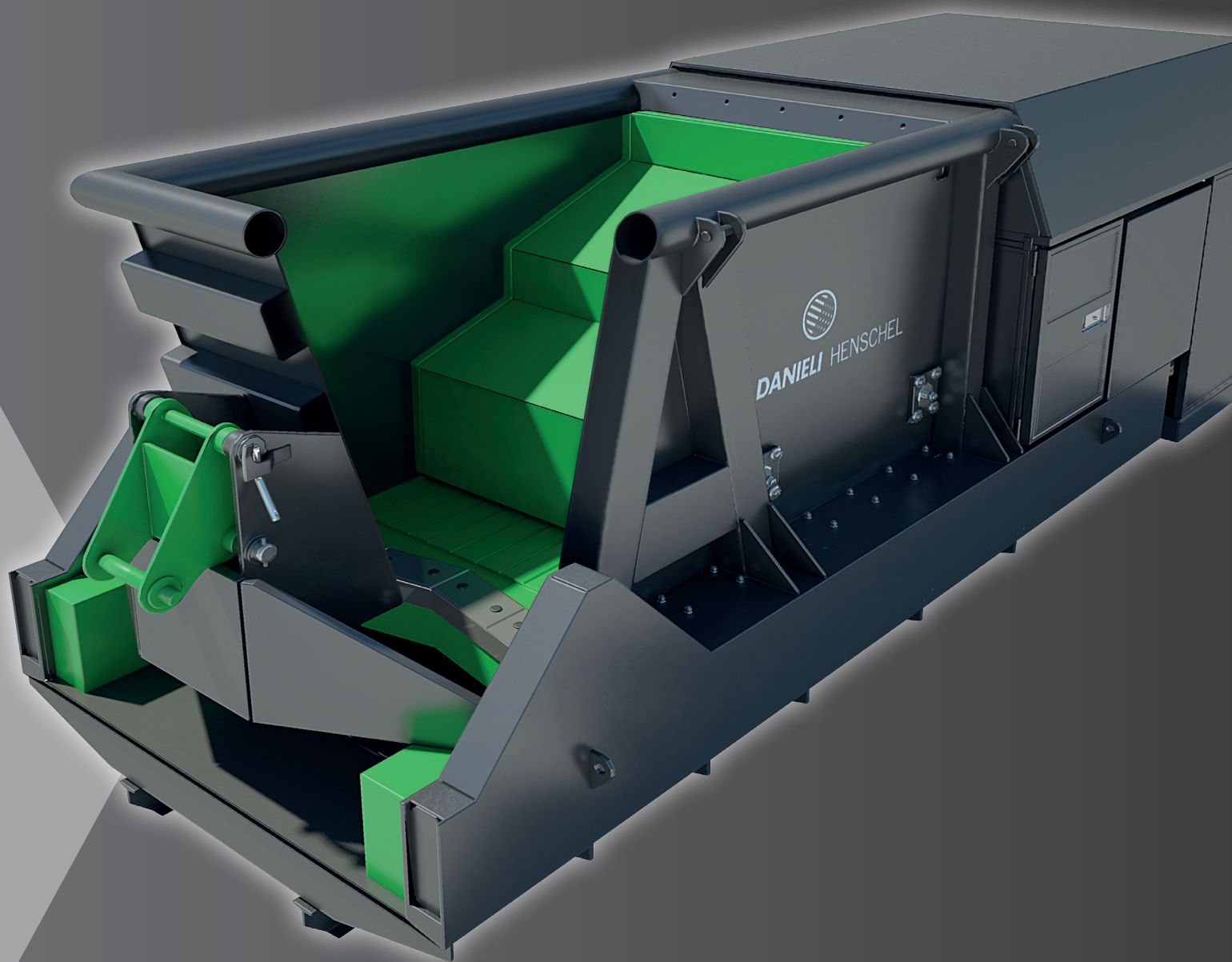


# HORIZONTAL SHEARS

▶ **COMPACT 800**

**DANIELI HENSCHEL**



# HORIZONTAL SHEARS

## COMPACT 800



### MAIN SPECIFICATIONS

Shearing force	800 t	
Shearing width	1 500 mm	
Shearing height	400 mm	
Presser force	100 t	
Shearing rate	Up to	2 cuts / min
	Length	2 450 mm
Hopper dimensions	Width	1 600 mm
	Loading height	2 380 mm
Installed power	90 kW	
Production capacity (*)	Up to	5 t/h
	Round	165 mm
Shearing capacity <small>for strength = 360 N/mm<sup>2</sup></small>	Suare	145 mm
	Sheet length 750 mm	62 mm
	Total length	6 250 mm
Transport dimensions	Total width	2 450 mm
	Overall height	2 600 mm

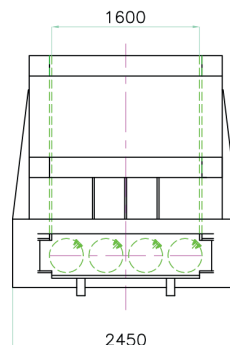
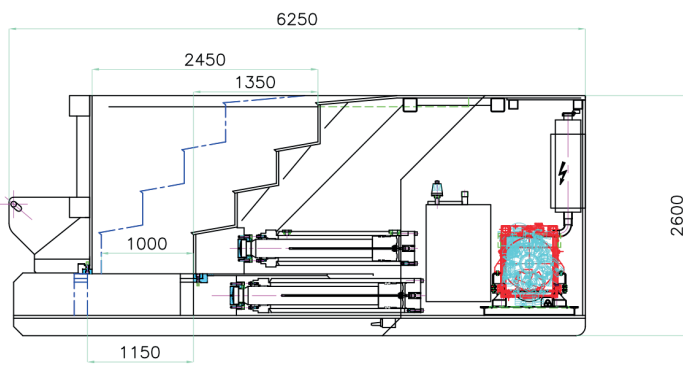
(\*) Higher or lower values may be obtained, depending on the density, form and type of the incoming materials, the processing and loading conditions. This technical data are not contractual; DANIELI HENSCHEL therefore reserves the right to modify its product specifications at any time without prior notice.

### SPECIFIC ADVANTAGES

- Easily transportable without specific authorization
- Simplified customs formalities
- Fast loading / unloading and positioning
- Time release for the crane driver to manage the scrap yard
- No foundation required

### WORKING PROCESS

- Continuous automatic shearing operation cycle
- Direct and continuous loading an open box with great storage capacity
- Compression of scrap for each cycle by means of a staged horizontal ram
- Automatic indexing of the shearing capacity (400 or 800 t) in accordance with metal scrap being process



COMPACT 07/2015 - GB



## DANIELI HENSCHEL

FRANCE  
BP 9440 - 73094 CHAMBERY  
CEDEX - FRANCE  
Tél. +33 (0)479 62 26 44  
france@danieli-henschel.com

DEUTSCHLAND  
Henschelplatz 1  
34127 KASSEL - GERMANY  
Tel. +49 (0)561/ 801 5816  
germany@danieli-henschel.com

РОССИЯ 125284, Г. МОСКВА  
Ленинградский проспект  
д. 31А, стр.1, 24 этаж  
Тел. +7 495 983 00 80  
russia@danieli-henschel.com

CHINA 中国  
北京. 大兴区亦庄  
经济技术开发区景园街8号  
电话: +86 (10) 6512 1740  
china@danieli-henschel.com